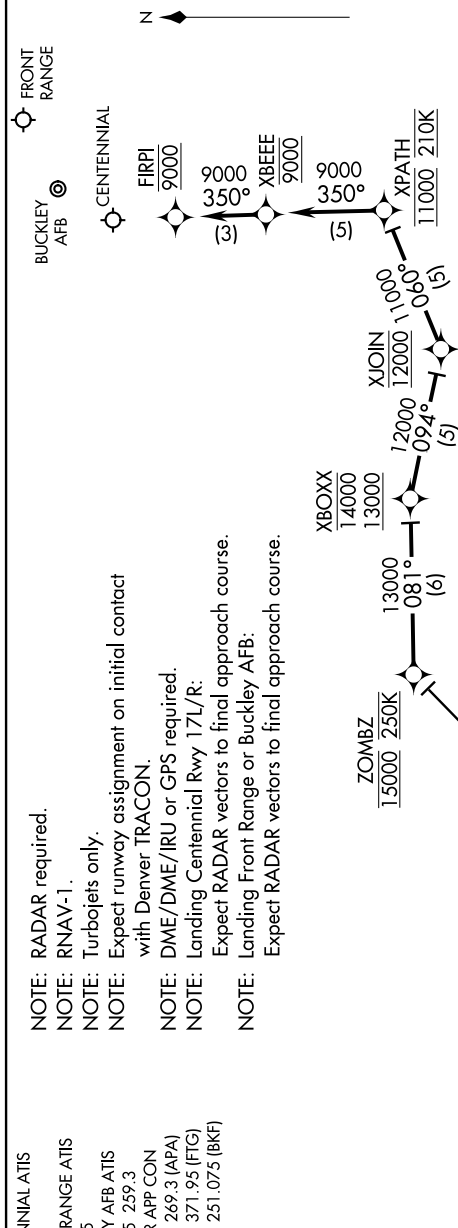


CENTENNIAL ATIS
120.3
FRONT RANGE ATIS
119.025
BUCKLEY AFB ATIS
119.675 259.3
DENVER APP CON
132.75 269.3 (APA)
128.25 371.95 (FTG)
128.45 251.075 (BKF)

NOTE: RADAR required.
NOTE: RNAV-1.
NOTE: Turbojets only.
NOTE: Expect runway assistance with Denver TRACON.
NOTE: DME/DME/IRU only.
NOTE: Landing Centennial.
NOTE: Expect RADAR vectoring.
NOTE: Landing Front Range.
NOTE: Expect RADAR vectoring.



ARRIVAL ROUTE DESCRIPTION

VRAIN TRANSITION (VRAIN.ZOMBZ1)

From ZOMBZ on track 081° to cross XBOXX at/above 13000 and at/below 14000, thence as depicted to cross FIRPI at 9000.

LANDING CENTENNIAL: Expect ILS RWY 35R or visual approach as assigned by ATC.

LOST COMMUNICATIONS

LANDING CENTENNIAL: In the event of lost communications prior to runway assignment, execute the ILS RWY 35R.

LANDING FRONT RANGE: In the event of lost communications prior to runway assignment, execute the ILS RWY 26.

LANDING BUCKLEY AFB: In the event of lost communications prior to runway assignment, execute the ILS RWY 32.

NOTE: Chart not to scale.

ZOMBZ ONE ARRIVAL (RNAV)